

DOMIQ/Base

DOMIQ/Base is the foundation of the **DOMIQ** system.

It is designed to be installed in the installation closet on the 35mm DIN rail. It is recommended to leave additional space for two 2T modules for optional extensions. Before installation on DIN rail please push lock on the bottom of the module.

Connections

Module should be connected to the installation in following order:

- **N** neutral wire
- **L** phase wire, 230V 50Hz
- **D** LCN data wire

Although typical voltages on LCN data wire are between -30 to +30V, it should be treated like phase wire.

Warning! It is critical to connect correctly phase and neutral wire. In case of wrong connection module will work, but no communication with LCN bus will be possible due to wrong voltage reference.

ISP connector is used for manufacturer test and programming purposes. It should not be touched or shorted, as such actions might lead to transient errors in the module operations.

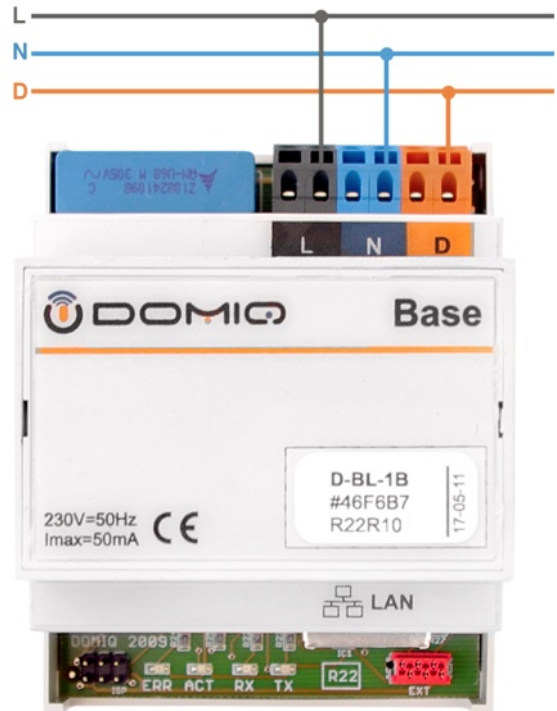
Additional extension modules are connected using **EXT** connector.

Signaling

Status LEDs are installed on the lower part of the module: **ACT** (blue), **ERR** (red), **TX** (yellow), **RX** (green). After power on, **ACT** leds on all modules will turn on. Normal operation of the module can be recognized by quick blinking of the **ACT**. **TX** blinks when **LCN** packet is transmitted. **RX** blinks when **LCN** packet is correctly received. **ERR** blinks in case of **LCN** reception error.

If the **LCN** interface detects more than 16 collisions in a row while sending a packet, transmitter will be blocked. This is signaled by **ERR** lighting, and during that time no transmission is possible. During transmitter block packet are still received. After about 30 seconds transmitter will be unblocked.

ERR continuous lighting could mean a short circuit on the data line. If the **ERR** still is lit even when the data line is not connected, it could signal internal fault of the **LCN** bus interface.

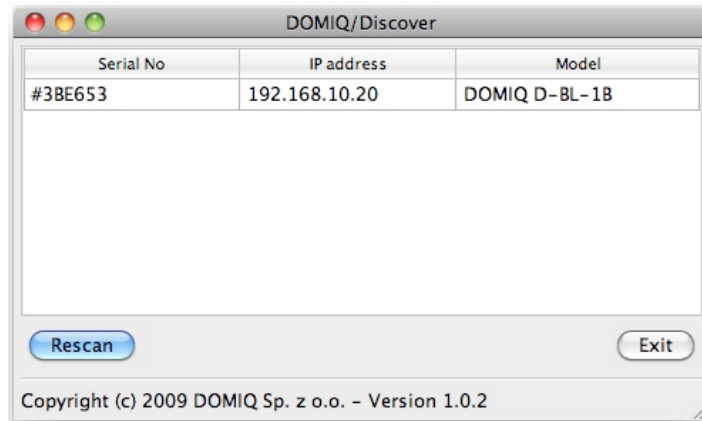


Network connection

In order to use and configure the module it is necessary to connect it to the ethernet network. To do that, connect Fast Ethernet RJ-45 wire to the **LAN** connector of the module. When network link is active, yellow led on the **LAN** connector will turn on.

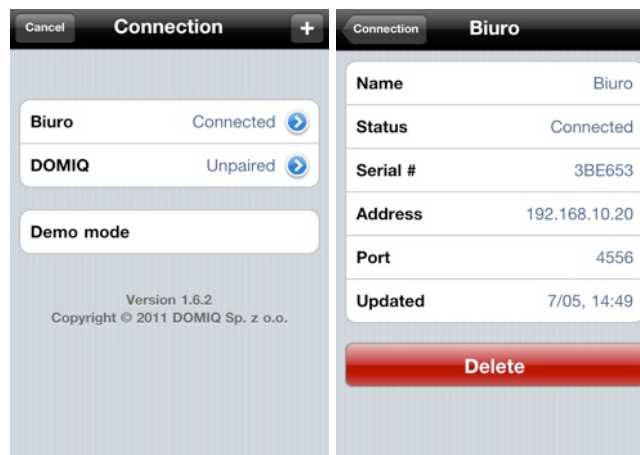
IP address of **Base** module can be found using the **DOMIQ/Discover** application. You can download it from our website: www.domiq.pl. Versions for **Windows** and **MacOS** are available. Download links are placed in the right column of the **Product/Base** webpage.

After running the program, following window appears:



Double-clicking on the module description displays information from internal console of the module. This information can be useful in solving problems.

You can also read the IP address in the **DOMIQ/Remote** application menu. Clicking on the blue icon with the arrow displays information about all detected modules:



To pair with the **Base** module, open the configurator (described in next section) and generate pairing code by clicking on the **Refresh** button on the **Settings** tab.

Generated code is valid for 5 minutes and can be used to pair only one device.

You can find more details about pairing of devices in the **DOMIQ/Base User Manual**.

Configuration and Updates

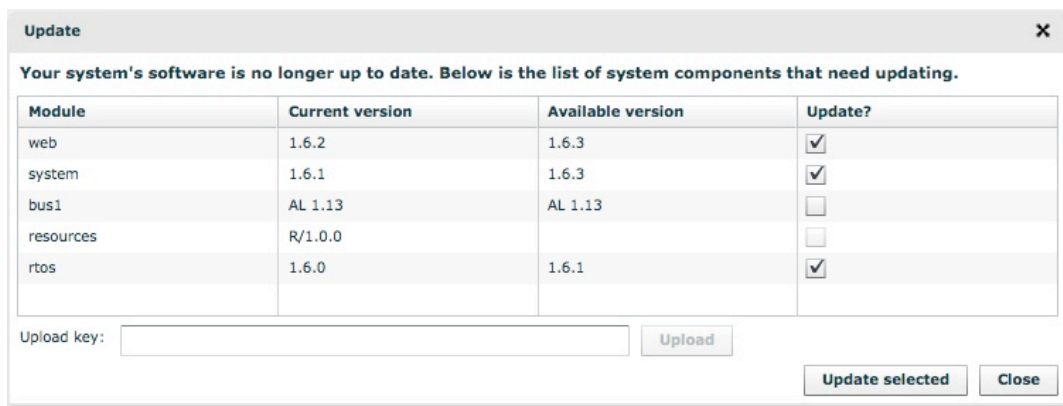
DOMIQ/Base module is configured using built-in configuration application running in a web browser. The application requires the **Adobe Flash Player** to be installed.

To run the configurator, enter IP address of the **Base** module in the browser address window. Default login and password is: *admin* and *admin*.

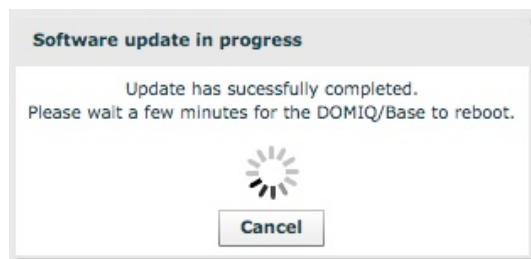
For best operation of the module we recommend to use the latest software available. All updates can be downloaded automatically by the module from the update server, or can be downloaded manually from the **DOMIQ** website.

Automatic update

Log in to the configurator, choose **Settings** tab and click on the **Updates** button. Pressing this button shows a pop-up window with a list of software updates. The list is downloaded from the **DOMIQ** software updates server. Pressing the **Update selected** button initiates the update process.



Update process may take a few minutes. During update **DOMIQ/Base** module is unavailable. When update is complete, the module reboots automatically and after few minutes will be ready to use with updated software. Successful update process is confirmed by following message:



Manual update

In case when **DOMIQ/Base** module is not connected to the Internet, it is possible to download updates to the computer with Internet connection from www.domiq.pl page, **Support/Updates** section and then upload it to the module manually. To run manual update the upload keys are required, which are available on the updates web page separately for each file.

Updated files are uploaded to the **Base** module using **Updates** dialog box. Enter the upload key in the **Upload key** field. Next Click on the **Upload** button and browse the upload file from your computer. Repeat this procedure for the other update files.

When update process is finished please reboot the module by clicking on the **Restart** button in the **Settings** tab.

Programming the LCN

DOMIQ/Base module can be used as **LCN** coupler, replacing **LCN-PK** interface. With this feature it is possible to program the **LCN** using PC with **LCN-Pro** software.

For communication TCP port 4114 is used. Default login and password is: *lcnpro*. By default communication from different IP networks that that of the **Base** uses is blocked. You can change that in the **Base** configurator.

To use TCP connection int the **LCN-Pro**, open or create new project and click on the **On-line** button. In the window that appears, select **TCP/IP** tab and fill available fields, as presented below:



In the **Server name/address** field, enter **Base** IP address. Latency field should be changed to 100ms for local networks.